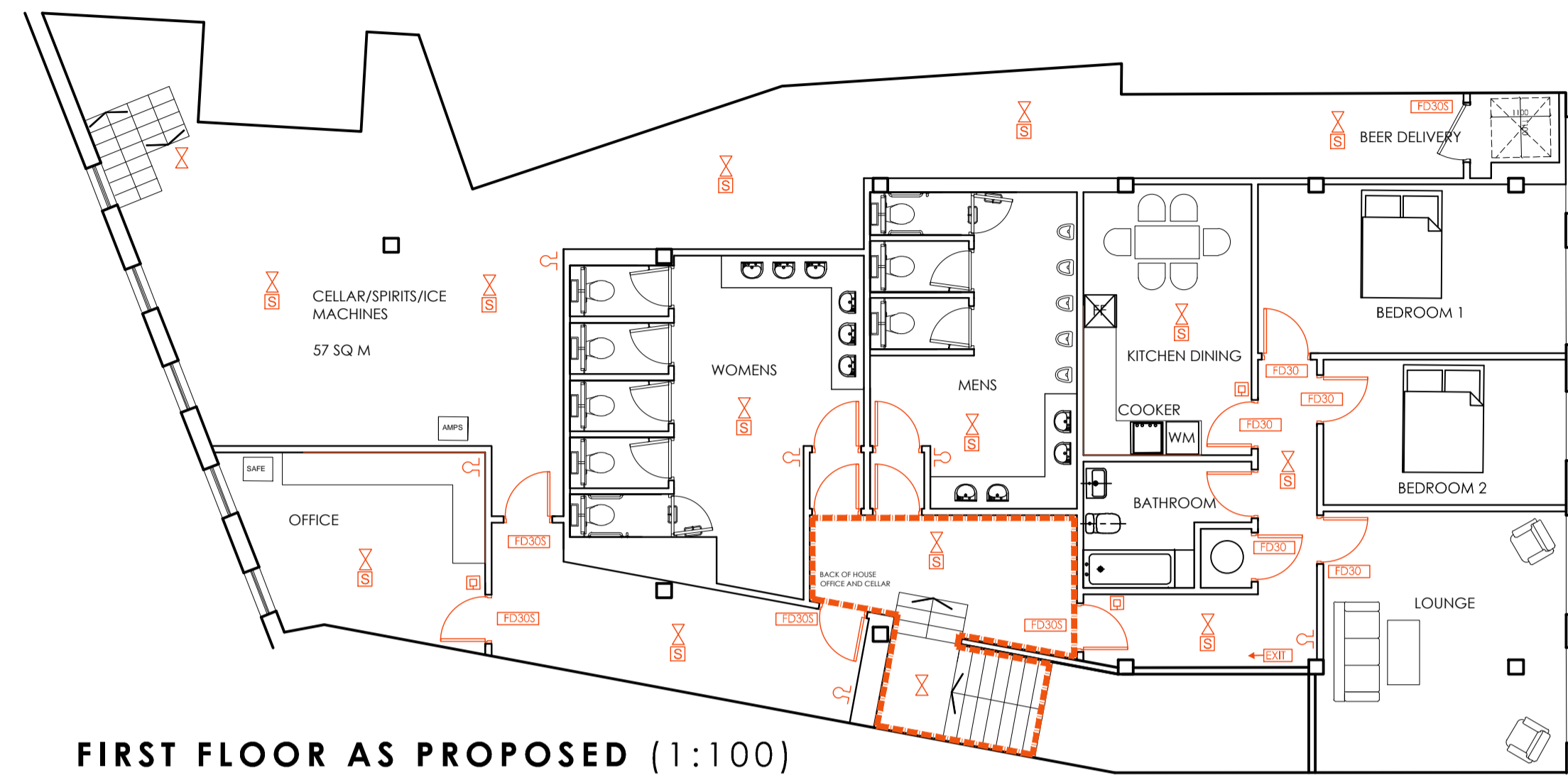
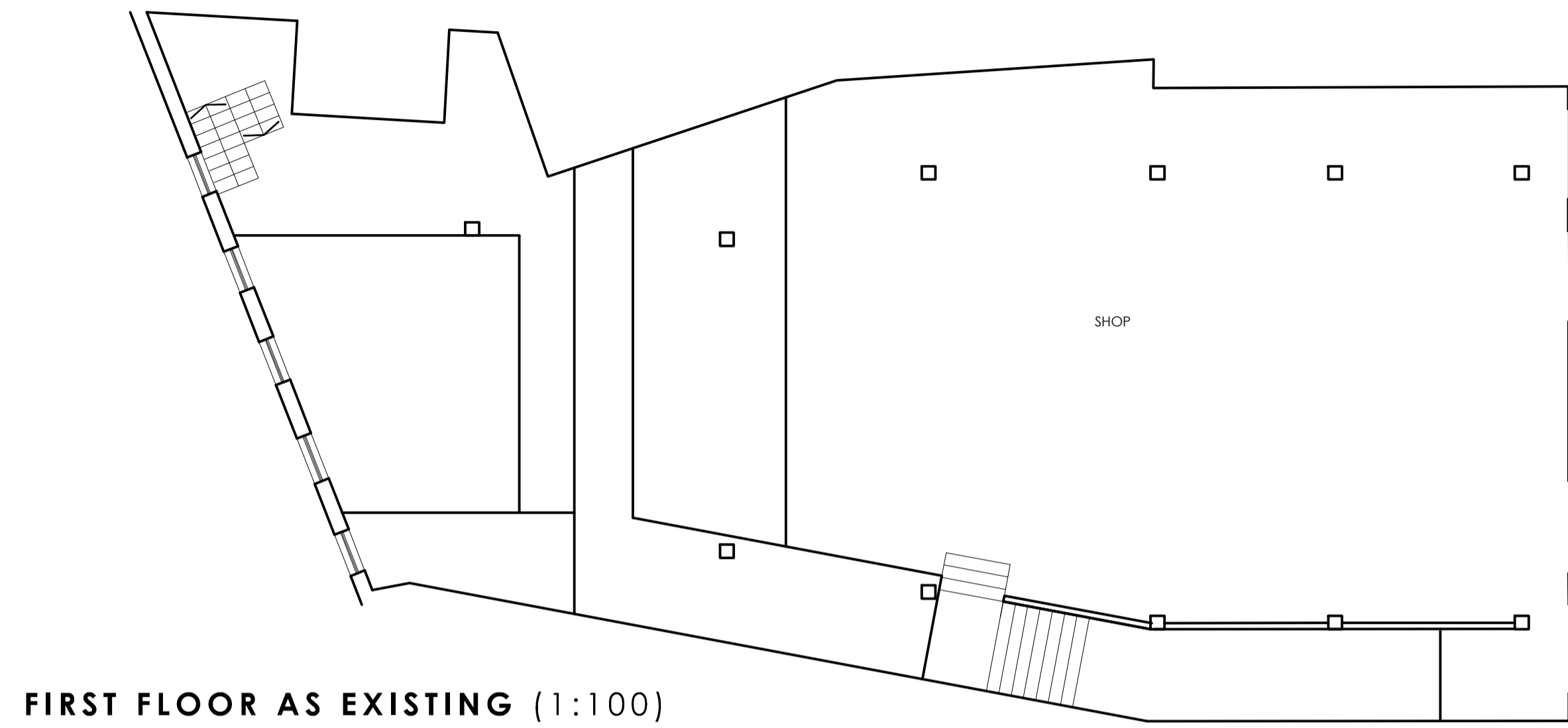
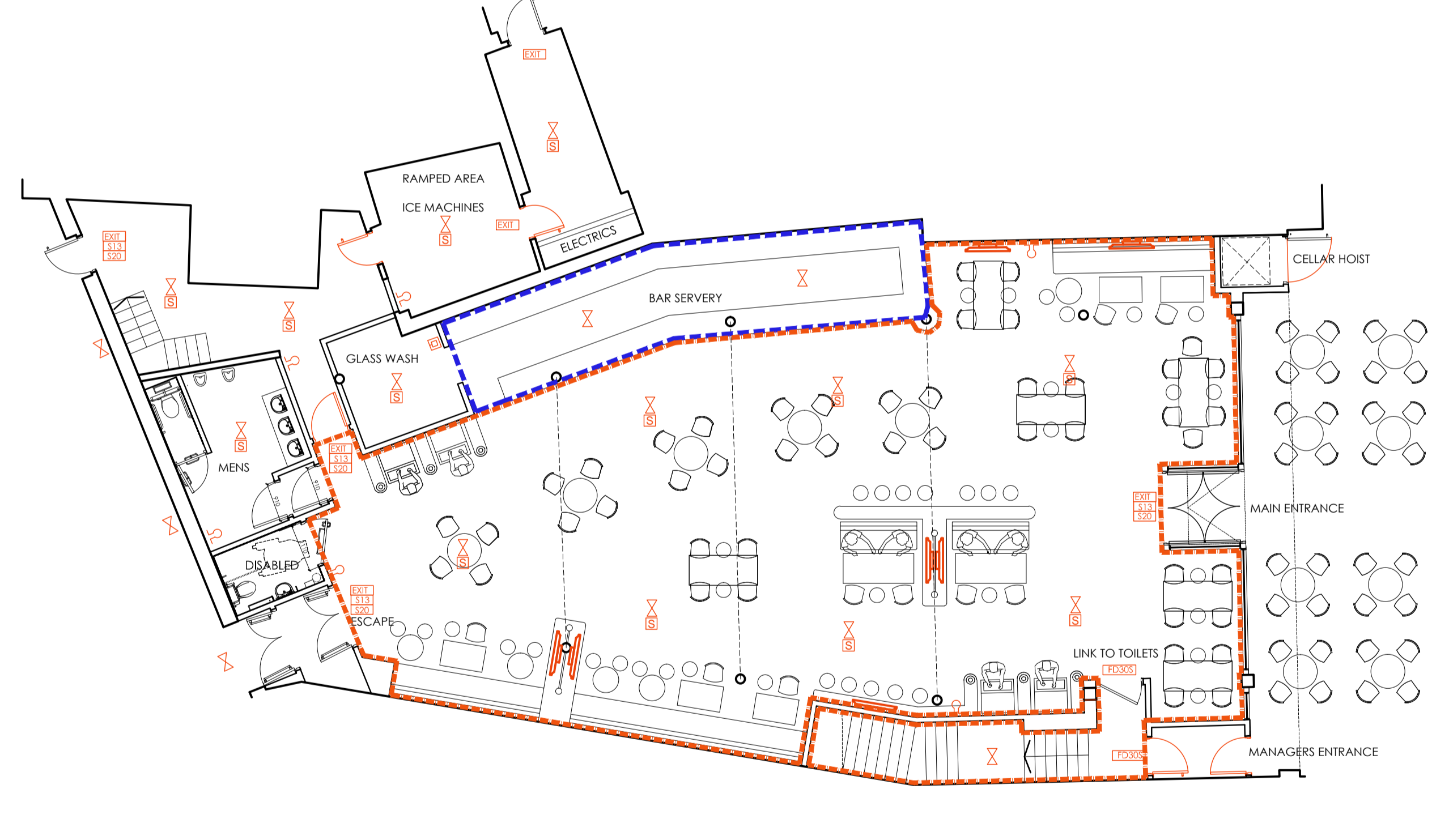
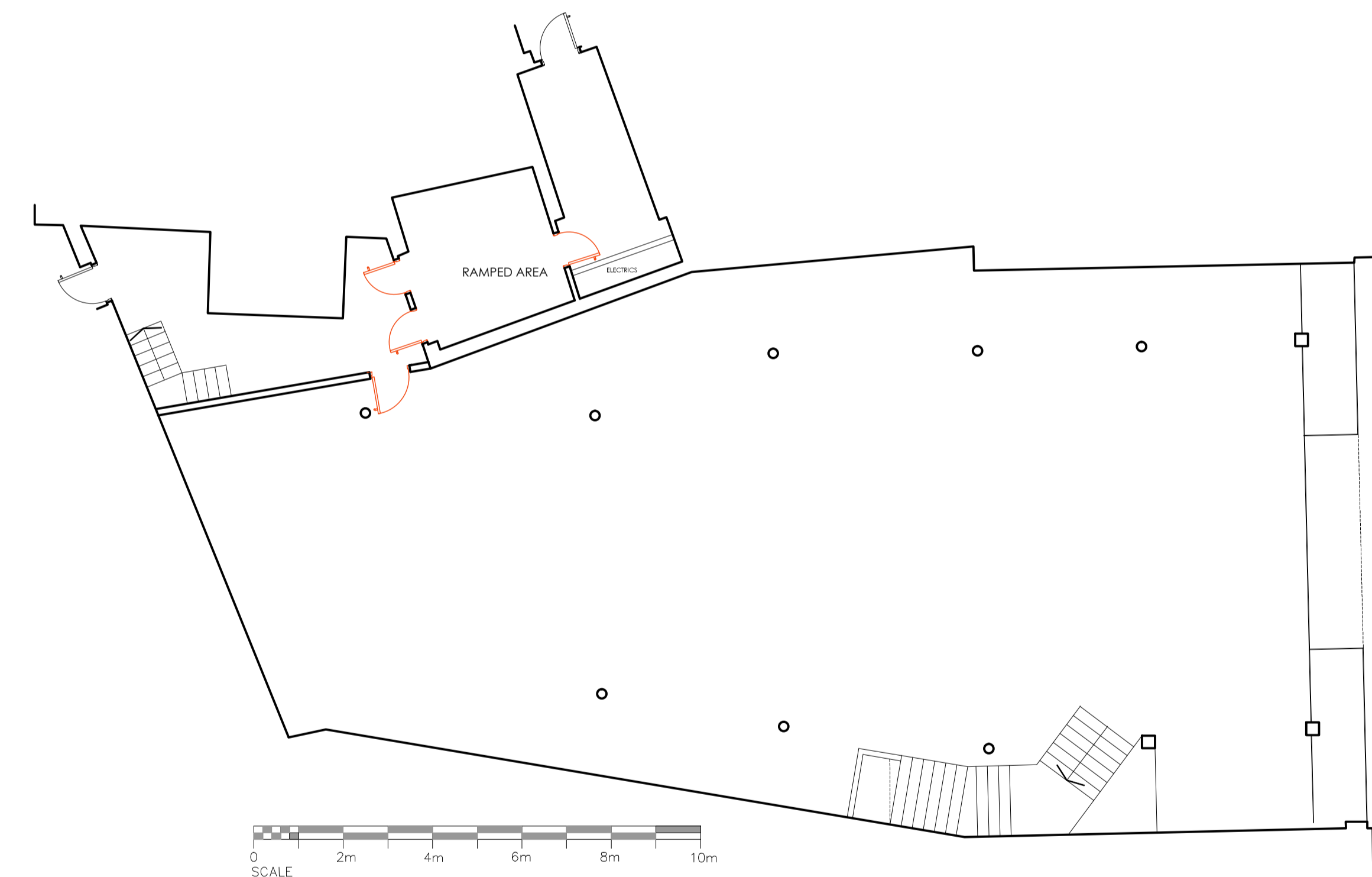


"Copyright in this drawing remains with the architect.
 Responsibility is not accepted for errors made by others in scaling from this drawing.
 All construction information should be taken from figured dimensions only.
 Check all dimensions on site. In case of any discrepancy, refer query to the architect."



KEY:-

- AREA TO BE USED FOR THE SALE OF ALCOHOL
- BAR DEMISE
- RED - NEW EQUIPMENT
- EXISTING EQUIPMENT
- BREAK - GLASS FIRE ALARM POINT
- SMOKE DETECTOR
- FIRST STAGE SOUNDER - HEON
- 1/2 HOUR FIRE RES S/C DOOR WITH S/SEAL
- PUSH BAR OPENING DEVICE
- FIRE EXIT KEEP CLEAR
- FIRE DOOR KEEP SHUT
- EMERGENCY LIGHTING LUMINAIRE
- RUNNING MAN DIRECTIONAL ARROW PROVIDED. DIRECTION INDICATED
- ILLUMINATED EXIT SIGN



GROUND FLOOR AS EXISTING (1:100)

GROUND FLOOR AS PROPOSED (1:100)

Rev	Description	By	Date

PROPOSED NEW DEVELOPMENT
 11 - 13 CAROLINE STREET, BRIDGEND FOR AMBER TAVERNS

LICENSING

DRAWN NM	DATE 24-07-23	DRAWING NO.
SCALE 1.100 @ A1	REV.	23007-02